

CHALMERS





NORDIC RESEARCH NETWORK FOR ARCHITECTURAL ANTHROPOLOGY
SBI/AAU Copenhagen October 10-11 2018

**Social Anthropological Interdisciplinary Perspectives –
From *Architecture in Effect* to
the *AIDAH* Research Environment 2011-2019**

Sten Gromark

Dr Architect Professor

ACE Building Design

School of Architecture,

Chalmers University of Technology,

Göteborg, Sweden

Formas supported SRE Architecture in Effect. Rethinking the Social in Architecture.

KTH Architecture, Stockholm, SE.

Formas supported SRE AIDAH Architectural Inventions for Dwelling, Ageing and Healthcaring. Chalmers

Architecture ACE, Göteborg, SE.

Center for Residential Architecture | Centrum för Boendets Arkitektur

EU COST Action TD1408 Intrepid – Interdisciplinarity & Transdisciplinarity

CIB Commission W069 Residential Studies

Academic *Transgression*
Cross-disciplinarity,
Social Architecture + Social Anthropology

The Architectural Project, or Situation, in
Anthropological Interpretations

EU COST Action 2014-19 *Intrepid*

**Transdisciplinary *Singularity* of urban
architectural research –
a different mode of knowledge co-
creation?**

‘...transdisciplinary research is needed when knowledge of a societally relevant problem field is uncertain, when the concrete nature of problems is disputed, and when there is a great deal at stake for those concerned by problems and involved in dealing with them...’

(Doucet and Janssens 2011: 2) quoting (Pohl and Hirsch Hadorn 2008: 427-32)

‘Actually, the ambiguities stimulate mutual explorations and debates among members of a group after a first moment of communion of shared fascination in front of the architectural project, leading to an architecturally projected new critical re-appraisal of their life world. --- It is these deep transformations introduced and implanted by the inventor of the simulacra in the mind of the architectural subject --- it is these debates and not the form itself given to the simulacra that brings out, produces this clarifying insight.’

Michel Conan et al 1998:211

COST Action Intrepid 2016-2019

Intra-,

Cross-,

Inter- and

Trans-disciplinarity –

**Interpretations and Implementations of
Singularity?**

Academic Transgression
Cross-disciplinarity,
Architecture + Philosophy

UTFORSKANDE ARKITEKTUR

STEN GROMARK & FREDRIK NILSSON (RED.)

UTTES

OLE

CTION

Case #1

Fahle Maja, Tallinn, Estonia, [1926] 2006

Residents confronted with radical transformations and high intentions of locally branding, hybrid architectural design

Cross-disciplinarity

Architecture + Sociology



What makes living so enjoyable in this building is *that it is not intended as a residence*.
Everything is non-standard—corridors are too wide, ceilings too high, windows too big, stairways
too long, etc. I am a hopeless fan of everything industrial and I have always admired this dark
ghost—tower as the perfect place to live.

Ojari, T. (2007). 'Fahle building in Tallinn' in *maja (EE)* (1-2007), a presentation of the Fahle Building in Tallinn, 2006, KOKO Architects, Raivo Kotov & Andros Kõresaar, quotation from a musician, resident in Fahle Building, Tallinn, author's italics.

Case #2

Bois-le-Prêtre, Paris 2017

Residents confronted with radical symbolic transformations with high intentions of architectural residential design

Cross-disciplinarity

Architecture + Sociology





- ❑ 2 The winter garden extension – a crucial key creative catalyst of exceptional residential appropriation, but also a highly questionable provocation or sometimes...just simply ignored?

*“Light is beautiful. But we have to keep the curtains closed because people would see what we’re doing in here. . . . If we switched on the light, everyone would see us. . . . But we have a beautiful view at least. . . . I open the curtains and I look out. . . . It’s clean and beautiful and . . . I step onto the balcony and look around . . . unlike in [our previous home in an Islamic country]. Last Saturday my daughter had her friends here. They were six girls . . . and they made plans for having a barbeque on the balcony when the weather turns fine”
(Amina).*



Ways of Residing in Transformation Interdisciplinary Perspectives

Edited by

Sten Gromark, Mervi Ilmonen, Katrin Paadam and Eli Støa

Ways of Residing in Transformation

*Sten Gromark, Mervi Ilmonen,
Katrin Paadam and Eli Støa*



Case #3

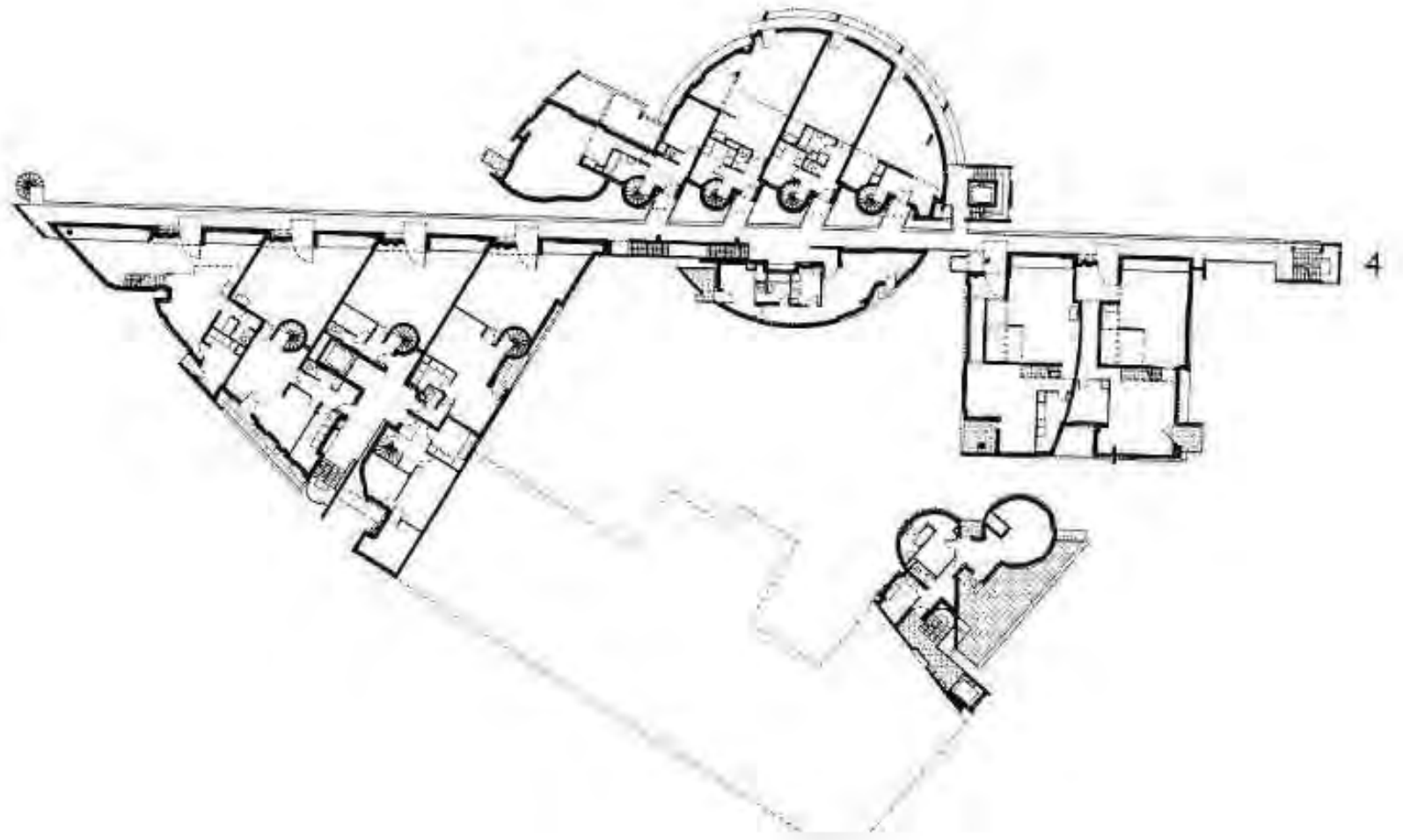
Cité d'Artistes, Paris, 1992, 2017

Residents confronted with high intentions of architectural design of unique typology; social housing atelier d'artistes apartment + studio in process of refurbishment

Cross-disciplinarity

Architecture + Sociology



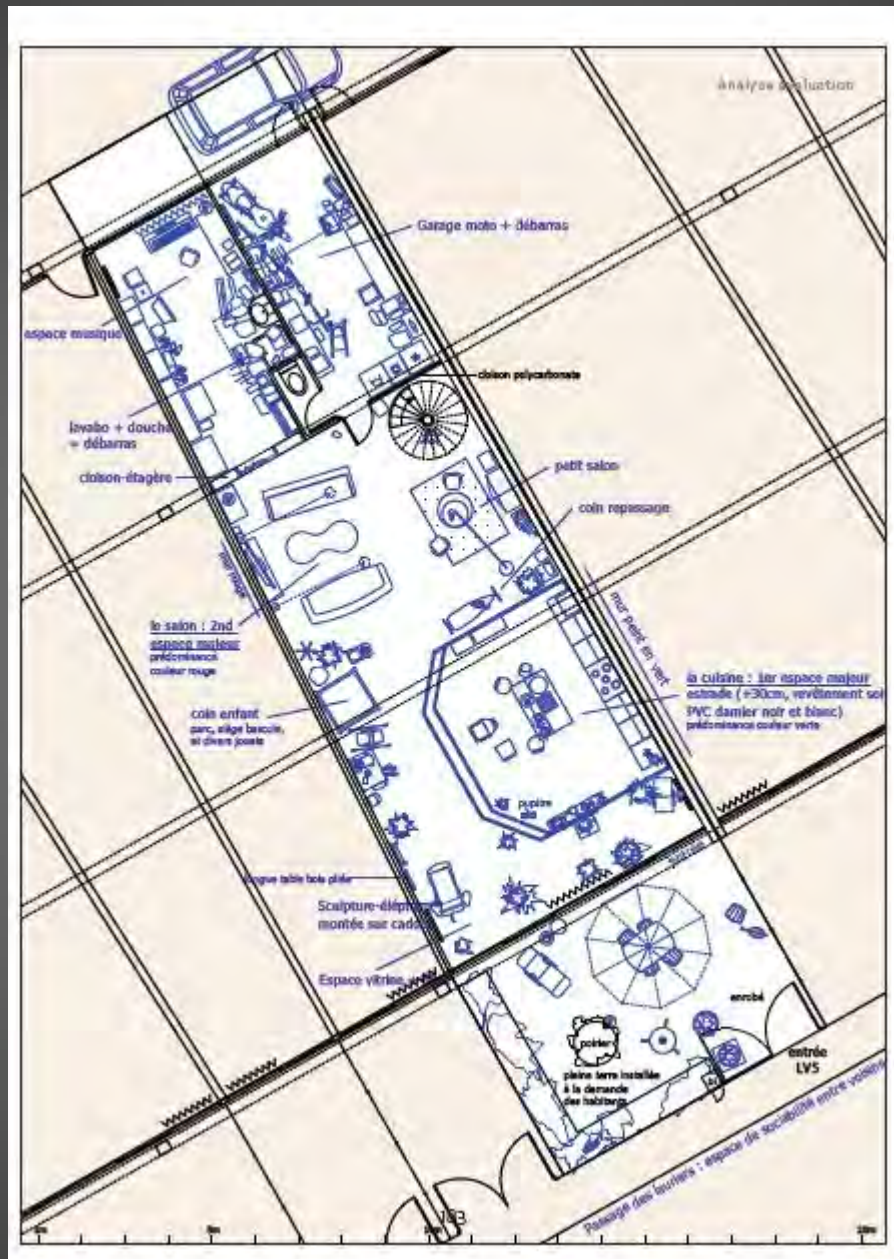


Cité

Manifeste,

Mulhouse







Case #0

Convivial Co-Housing in Europe diss. 1983

Cross-disciplinarity

Architecture + Sociology



Neubibergerstrasse Ralph & Doris Thut, München, 1974-77

Case #4

AiE Architecture in Effect 13-18

Multi- and Intra-disciplinarity

**A re-construction of disciplinary
academic identity from a manifold of
different standpoints**

**Re-thinking the
Social in
Architecture:
Making Effects
2018**

After Effects

If architecture has led to any consistency in a form of institutional knowledge, it has led to focus on how to represent critical architectural accounts of and the creative subjects (who) behind their construction and their construction as a social process. Architectural research is generally not about being overlooked in the public sphere. The discipline has a history of being overlooked in the public sphere because it is too focused on the practical and technical questions of day-to-day practice and process solving.

Edited by
Melene Fichter



Rethinking the Social in Architecture

That architecture serves as the setting for social actions, activities, and events is not a new idea. The architectural process can, in fact, be a site of social change, even contemporary design, even modern and digital design. Social research in architecture has made investigation toward "identity politics" the most visible role in rethinking political, economic, ecological, and cultural change.

Edited by
Sean O'Connell
Jennifer Mack
Paulette van Tuyn



Rethinking the Social in Architecture: After Effects

This collection serves as the setting for social actions, activities, and events is not a new idea. That the architectural process can, in fact, be a site of social change, even contemporary design, even modern and digital design. Social research in architecture has made investigation toward "identity politics" the most visible role in rethinking political, economic, ecological, and cultural change.

Edited by
Sean O'Connell, Jennifer Mack, and Paulette van Tuyn.
Editor of the book "Rethinking the Social in Architecture: After Effects"
Melene Fichter
Editor of the book "After Effects"

‘ That architecture serves as the setting for social actions, activities, and content is not a new idea. That the architectural project can precipitate crucial social change, even transgression, is a far more modern and disputed claim. Spatial design in society has recently shifted away from universal solutions toward satisfying specific market-orientated interests. The time is now to reclaim architecture’s dialogic, productive role in understanding and shaping political, economic, ecological, and cultural transformations. The radicality of architecture is renewed in the exploration of novel and unforeseen possibilities: making effects. ’

Editors’ Intro, *Architecture in Effect*, vol #1(2), 2018



After Effects

Theories and Methodologies in Architectural Research

If architecture has held to any consistency as a form of institutionalized knowledge this has tended to focus on both popular and critical historiographical accounts of architectural objects (icons) and the creative subjects (idols) behind their conceptualization and realization. As a result, serious architectural research is perennially at risk of being overshadowed by the poster boys (the gender ascription is intentional)—the icons and idols of architecture—or else dismissed as not intellectual enough because it is too focused on the practical and material questions of day-to-day practice and problem solving.

Edited by
Hélène Frichot
with Gunnar Sandin
and Bettina Schwalm





Rethinking the Social in Architecture

Making Effects

That architecture serves as the setting for social actions, activities, and content is not a new idea. That the *architectural project* can precipitate crucial social *change*, even *transgression*, is a far more modern and disputed claim. Spatial design in society has recently shifted away from mass emancipation toward what is often described as “identity politics.” The time is nigh to reclaim architecture’s role in effecting political, economic, ecological, and cultural change.

Edited by
Sten Gromark
Jennifer Mack
Roemer van Toorn





Architecture in Effects

That architecture serves as the setting for social actions, activities, and content is not a new idea.

That the *architectural project* can precipitate crucial social change, even *transgression*, is a far more modern and disputed claim. Spatial design in society has recently shifted away from mass emancipation toward what is often described as "identity politics." The time is nigh to reclaim architecture's role in effecting political, economic, ecological, and cultural change.

That the *architectural project* can precipitate crucial social change, even *transgression*, is a far more modern and disputed claim. Spatial design in society has recently shifted away from mass emancipation toward what is often described as "identity politics."

Volume #1

Rethinking the Social in Architecture - Making Effects

Sten Gromark, Jennifer Mack, and Roanmi van Toorn

Volume #2

After Effects: Theories and Methodologies

in Architectural Research

Hélène Frichot with Gunnar Sandin and Bettina Schawin

Formas Strong Research Environment 2011-2016

Architecture in Effect – Rethinking the Social in Architecture

Architecture in Effect is critically examining the role and agency of architecture in its cultural and socio-political context, e.g. concerning professional roles and education as well as power relations within and of architecture. It engages in current global economical, ecological and socio-political crises and conditions of sustainability, integration, gender equality, welfare and care. The research environment responds to these challenges, and makes a significant contribution to the development of new theories and methodologies for critical interpretations and articulations of architecture. It combines critical theory with methodological and topical perspectives that emphasise the material, spatial and symbolic specificity of architecture. Architecture in Effect is contributing on an international level to the development of new theories and methodologies for furthering a critically and socially engaged architectural research, education and practice. The environment is hosted by KTH, and involves researchers from KTH, Chalmers, LTH and UMU, as well as University of Gothenburg, Södertörn University, and Malmö University. It gathers a unique set of leading national experts in architecture theory, urban studies, architecture history, conservation, landscape planning, cultural geography, sociology, philosophy and the visual arts. Architecture in Effect structures its research in four program areas defined in relation to particular theoretical problems and methodologies within the field of architectural interpretation: *Critical Historiography*, *Material Conditions*, *Critical Projections*, and *Architects in Formation*. Effects and articulations of power relations are examined as constituted in the built environment and embedded within the architectural discipline and its societal relations. The environment hosts researchers with defined scientific output demands for concentrated periods of time, and builds a renewed research culture for the field through interdisciplinary dialogue.

‘*Critical interpretation* of the processes of making is a central focus of this work, and we address it from a dual perspective. On the one hand, we develop theories and methodologies for empirically well-grounded interpretations of the social meaning—overtly uttered or involuntarily hidden—ascribed to architecture, as seen from the perspective of the people who actually use or create physical spaces. These studies concern *situations* in time and space, constituted by specific material *structures* and the embodiment of *symbolic* meanings, related to a social *subject*, including the subjective positions of individuals or collectives who appear, use, and alter these spaces, as well as professional designers who create and change them from an official perspective.’

Editors’ Intro, *Architecture in Effect*, 2018

‘In the contributions included here, *four methodological perspectives* are represented, enabling the production of critical interpretations and articulations of the built environment. These are *historiographical*, investigating contexts situated mainly in the past; *case-based*, investigating situations and contexts in the past or present; *projective*, investigating and creating, through urban architectural projects, opportunities for the future; and, generally, the *unfolding of conceptual frames*. Buildings are considered both as material works and as social artifacts in operation. A shared concern has been to sharpen existing tools and to develop new ones that allow us to identify and examine architectural, planning, and design agencies on personal, material, and institutional levels. The innovations of the resulting approach constitute the interdisciplinary methodological profile of our common findings. We position the architectural profession as a “making” discipline to promote design-based knowledge production.

Case #5

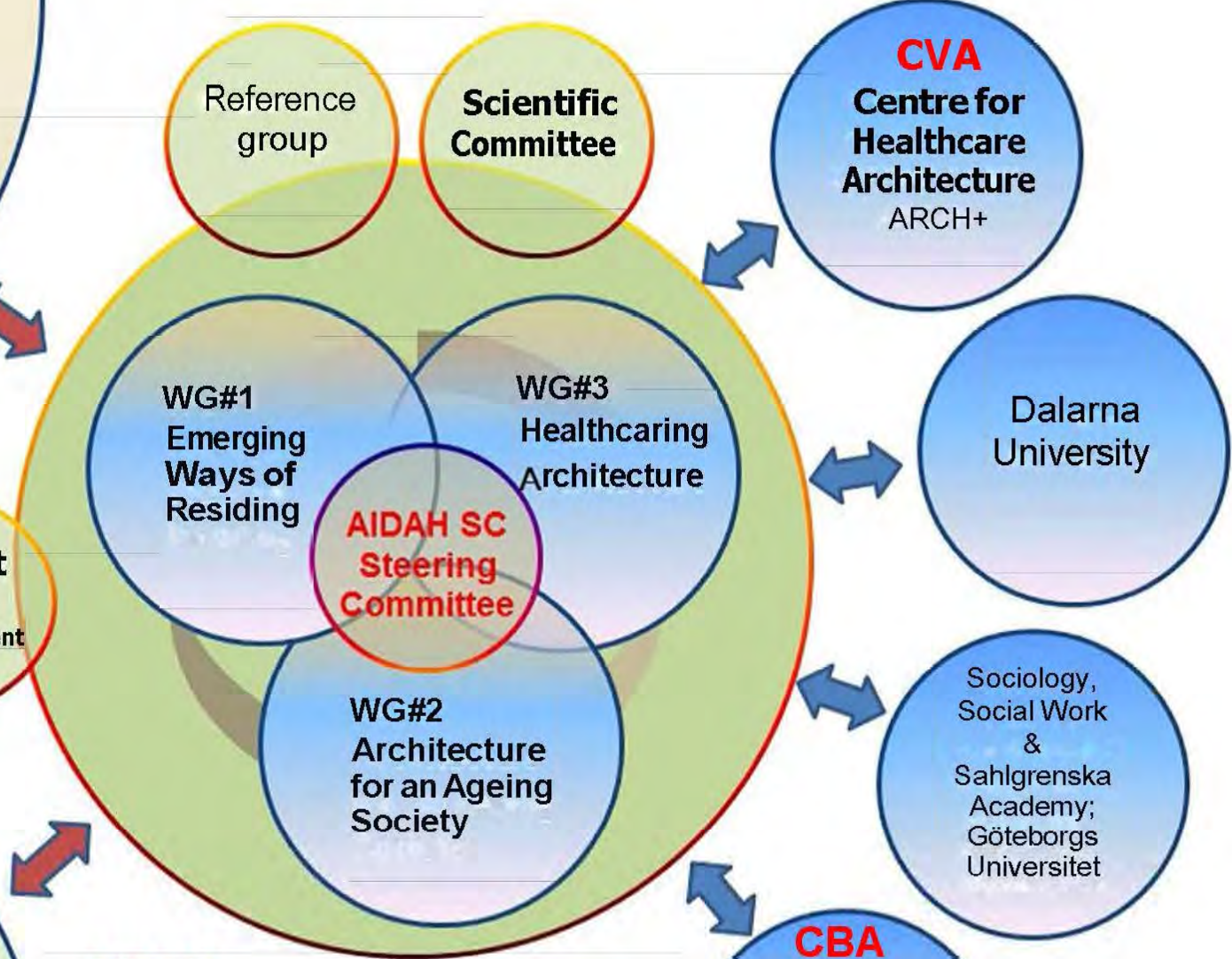
Formas funded *AIDAH* R&I Environment

Intra-, Inter- & Trans-disciplinarity

2013-19

Funding from Formas
The Swedish Research Council
2014-2018
Sustainable Building and Planning

Co-funding:
Västra Götalandsregionen, SKL, Forum vårdbyggnad, Skanska, White, Poseidon, Västfastigheter, Riksbyggen EF, HSB, Älvstranden AB & AB Framtiden



AIDAH
Architectural Inventions for Dwelling, Ageing and Healthcaring
Chalmers Architecture Research Environment ACE; Architecture and Civil Engineering

CVA
Centre for Healthcare Architecture
ARCH+

Dalarna University

Sociology, Social Work & Sahlgrenska Academy; Göteborgs Universitet

CBA
Centre for Residential Architecture
CIB W069
EU COST
Intrepid+ESA

MSB Project
Security & Residential Accident Prevention

Case #6

Positive Footprint Housing, *brf* Viva

R&I Explorations on Trans-disciplinarity

Knowledge Co-Creation by Dialogue

2013-19



Project Launch Model, 2 March 2016 by Riksbyggen EF
138 apartments with cooperative tenure with highest possible sustainable profile

Alterability,
Malleability,
Adaptability
Flexibility as
Social Sustainability

...sharing of electric car and vehicle pool, limited parking lots, extensive application of rooftop pv-cells and electric distributive production to the introduction of low cost starter flats for young residents and structural flexibility of apartments with extensive common facilities like a winter garden 'orangerie' for meetings, cultivation and social events...





1-1,5 RoK
41,9 m²

2-4 RoK
67,5 m²



1-1,5 RoK

41,9 m²

2-4 RoK

67,5 m²







CHALMERS

