



**INSTITUT FOR ENERGITEKNIK**  
AALBORG UNIVERSITET

# **STUDY PROGRAM EVALUATION**

## **SPRING SEMESTER 2019**

The Study Secretariat, Department of Energy Technology

December 2019

## Table of contents

<b>1. Introduction .....</b>	<b>3</b>
1.1 Contents of the report.....	3
1.2 Follow-up on the results.....	3
1.3 Abbreviations.....	3
<b>2. Response rate F19 .....</b>	<b>4</b>
<b>3. Overall evaluation .....</b>	<b>5</b>
<b>4. The academic level .....</b>	<b>6</b>
<b>5. The academic content .....</b>	<b>7</b>
<b>6. Progression (i.e. the development between the semesters) .....</b>	<b>8</b>
<b>7. Competence profile .....</b>	<b>9</b>
<b>8. Workload .....</b>	<b>10</b>
<b>9. Distribution of workload .....</b>	<b>11</b>

# 1. Introduction

## 1.1 Contents of the report

This report contains the quantitative data from the study program evaluation of the spring semester 2019. The qualitative data has been processed internally and in confidentiality by the Study Board for Energy.

## 1.2 Follow-up on the results

Overall, the evaluation shows that the students are predominantly satisfied with their study programs. The Study Board has processed the results. Unfortunately the response rate for the study program evaluation was very low at 16 % so the data quantity was quite limited.

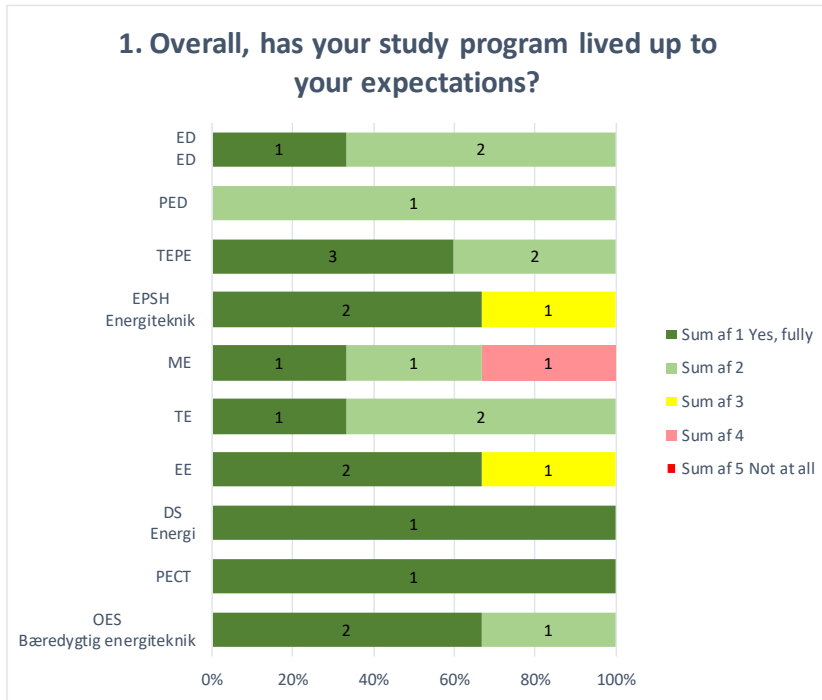
## 1.3 Abbreviations

- AIE: Applied Industrial Electronics
- DS: Dynamic Systems
- ED: Electronics and Computer Engineering
- EE: Electrical Energy
- EN: Energy
- EPSH: Electric Power Systems and High Voltage Engineering
- HYTEC: Fuel Cells and Hydrogen Technology
- IRS: Intelligent Reliable Systems
- MCE: Mechatronic Control Engineering
- ME: Mechatronics
- OES: Offshore Energy Systems
- PECT: Proces Engineering and Combustion Technology
- PED: Power Electronics and Drives
- TE: Thermal Energy
- TEPE: Thermal Energy and Process Engineering
- WPS: Wind Power Systems

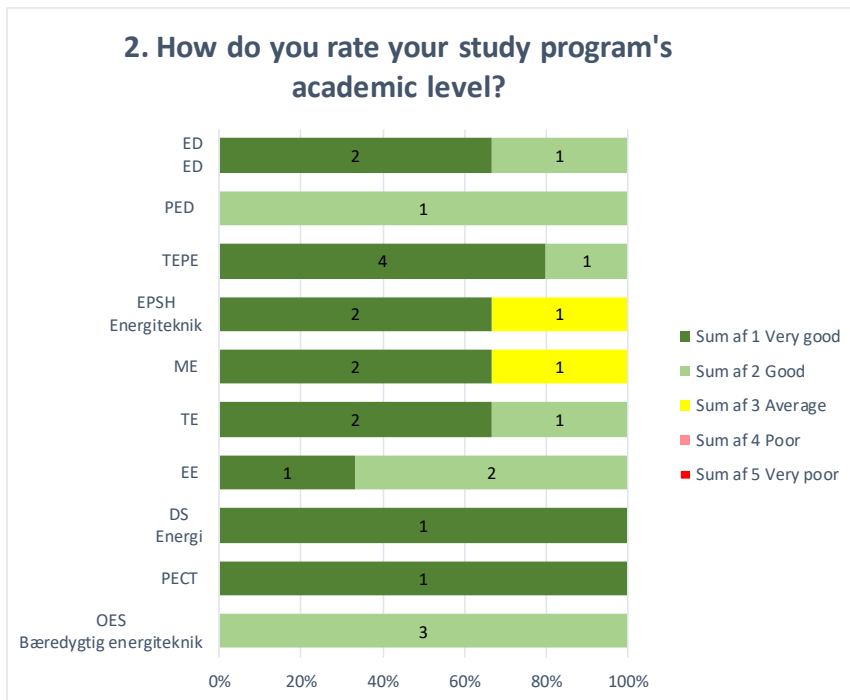
## 2. Response rate F19

Study program evaluation	Responsens	Students	Response rate
DS6 - Esbjerg	1	2	50%
ED6 - Esbjerg	3	15	20%
TP6 - Esbjerg	0	0	0%
EE6 - Aalborg	3	15	20%
ME6, MED6	3	26	12%
TE6, MED6	3	23	13%
EPSH4	3	11	27%
PED4	1	17	6%
WPS4	0	2	0%
IRS4	0	2	0%
MCE4	0	12	0%
OES4	3	14	21%
PECT4	1	7	14%
TEPE4	5	15	33%
<b>Sum</b>	<b>26</b>	<b>161</b>	<b>16%</b>

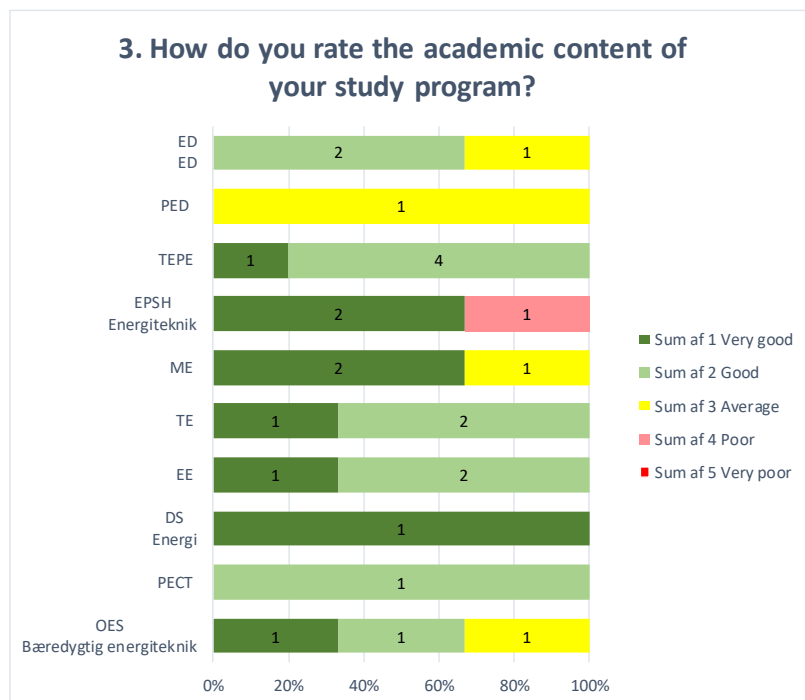
### 3. Overall evaluation



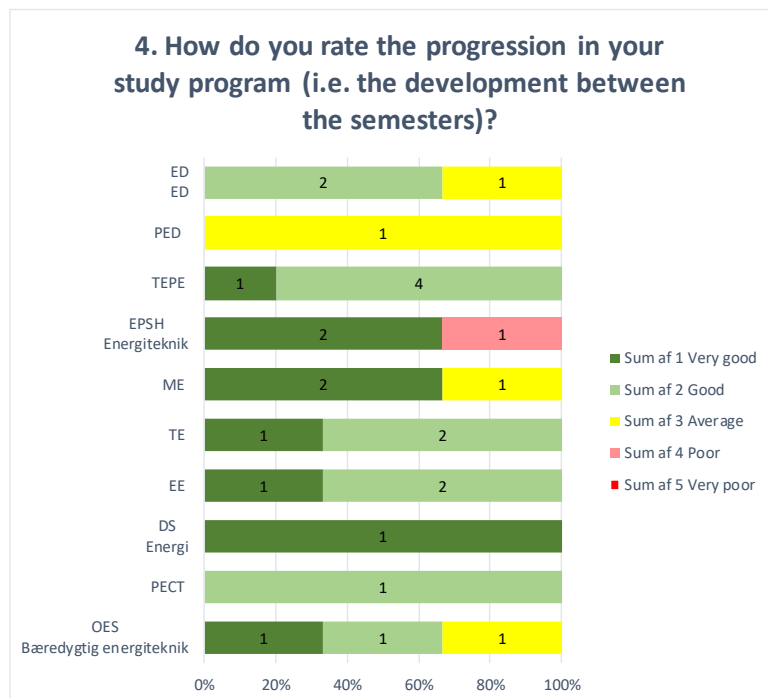
## 4. The academic level



## 5. The academic content

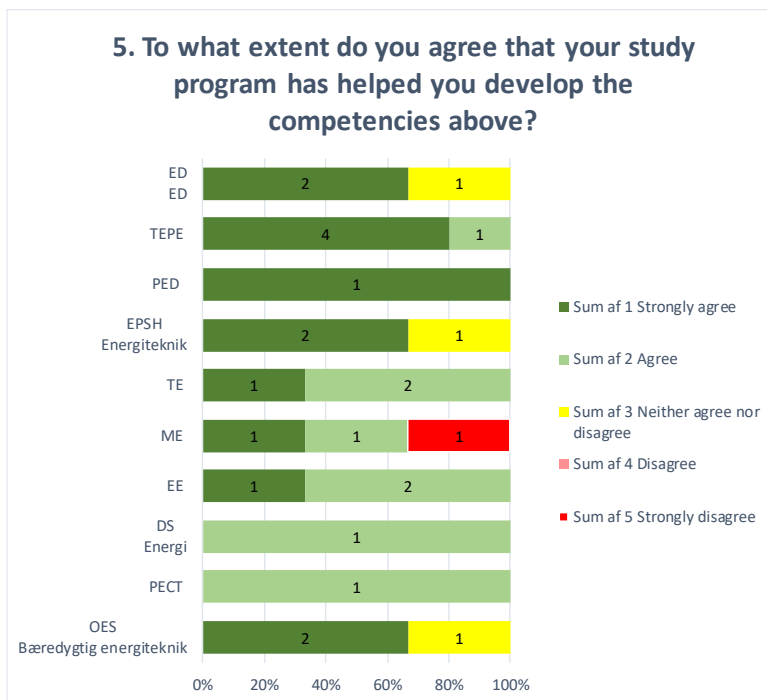


## 6. Progression (i.e. the development between the semesters)

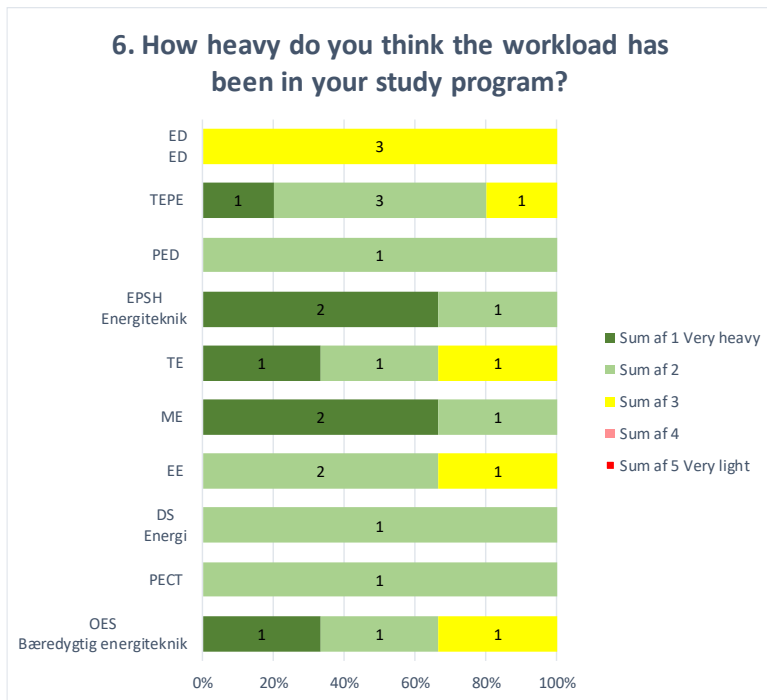




## 7. Competence profile



## 8. Workload



## 9. Distribution of workload

